

MSSART PATENT APPLICATION NOTES

***APPENDIX 14:- MSAART ATOMIC OCTAVE
RESONANT CHAMBER SHOCKWAVE GENERATOR
WITH
IMPLODED SPHERE SWIRL GUIDE***

DRAFT 518,400 B KMV – PART SEVEN OF TWENTY

**MALCOLM V of SCOTLAND | MALCOLM BENDALL
THURSDAY 22ND SEPTEMBER 2022**

APPLICATIONS FOR A PLASMOIDS FORM AND FUNCTIONS

FIG 193 : - PLASMOID RESONANT CAVITY

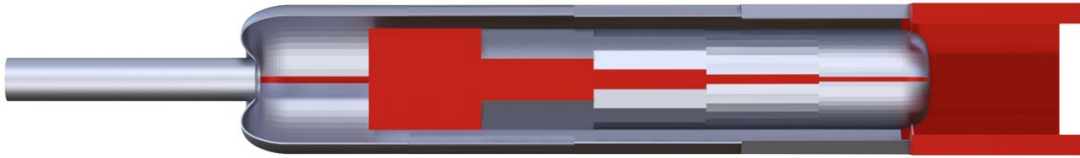


FIG 194 : - PLASMOID RESONANT CAVITY

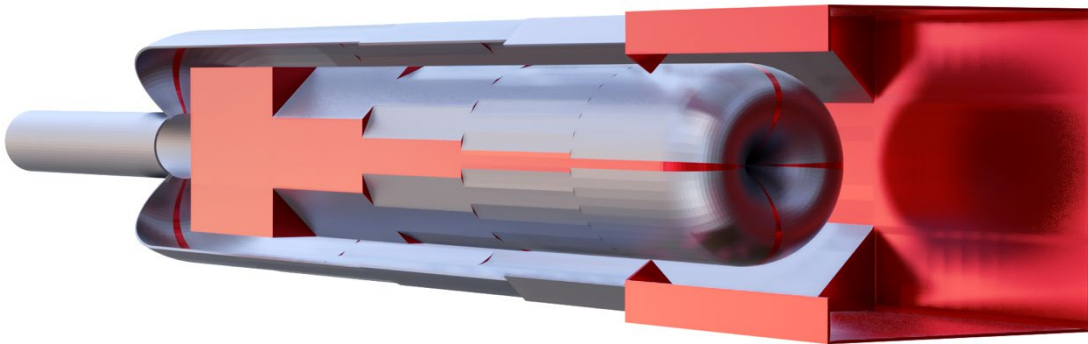
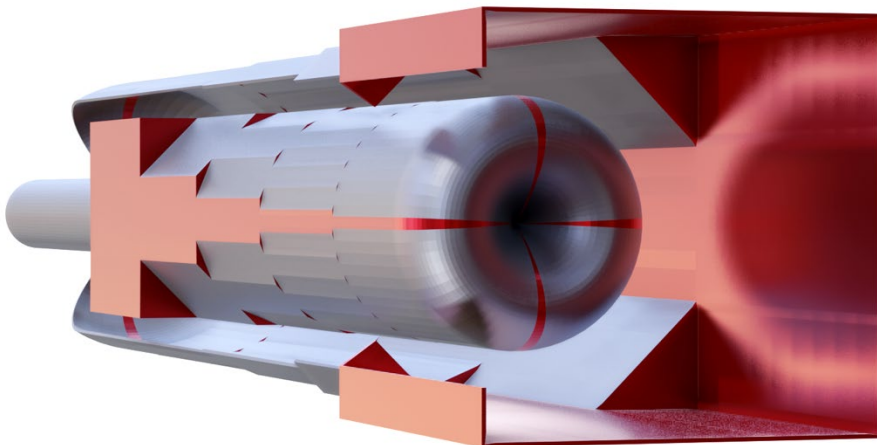


FIG 195 : - PLASMOID RESONANT CAVITY



APPLICATIONS FOR A PLASMOIDS FORM AND FUNCTIONS

FIG 196 :- PLASMOID RESONANT CAVITY

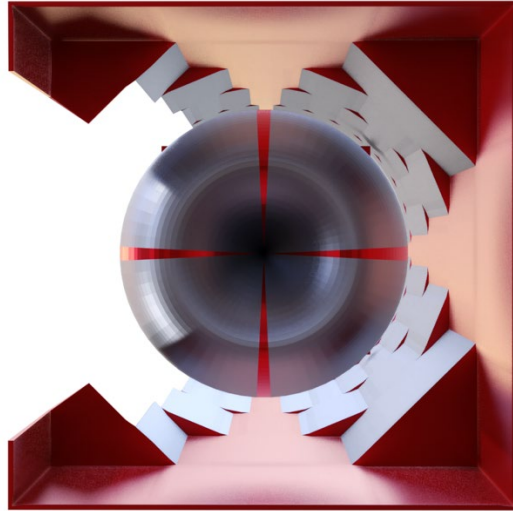


FIG 197 :- PLASMOID RESONANT CAVITY

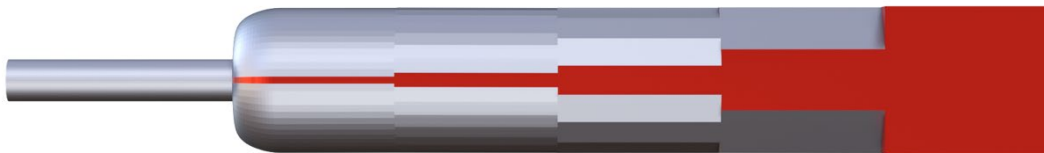
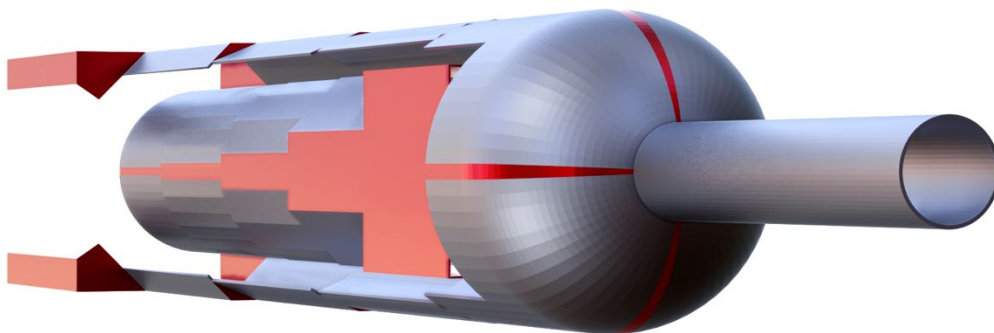


FIG 198 :- PLASMOID RESONANT CAVITY



APPLICATIONS FOR A PLASMOIDS FORM AND FUNCTIONS

FIG 199 : -SMOOTH END HALF SPHERES ON A SMOOTH CUBE

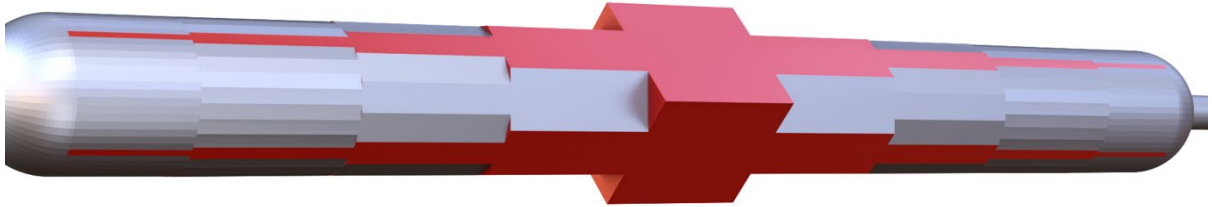


FIG 200 : -SMOOTH END HALF SPHERES ON A SMOOTH CUBE

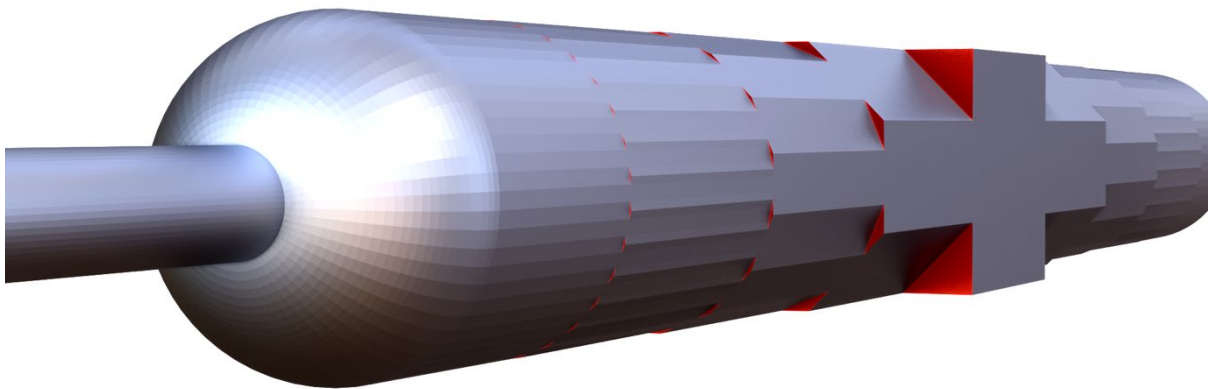


FIG 201 : -SMOOTH END HALF SPHERES ON A SMOOTH CUBE



APPLICATIONS FOR A PLASMOIDS FORM AND FUNCTIONS

FIG 202 : -SMOOTH END HALF SPHERES ON A SMOOTH CUBE



FIG 203 : -SMOOTH END HALF SPHERES ON A SMOOTH CUBE

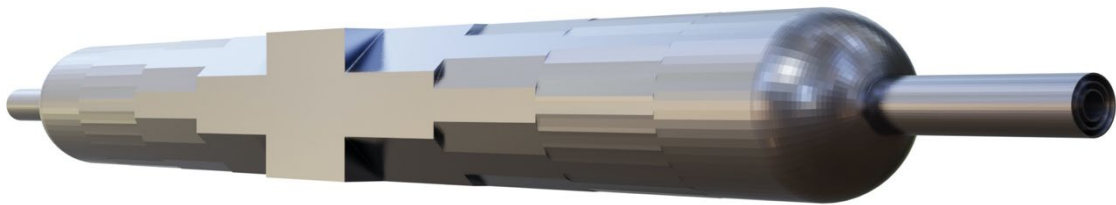


FIG 204 : -SMOOTH END HALF SPHERES ON A SMOOTH CUBE



FIG 205 : -SMOOTH END HALF SPHERES ON A SMOOTH CUBE

